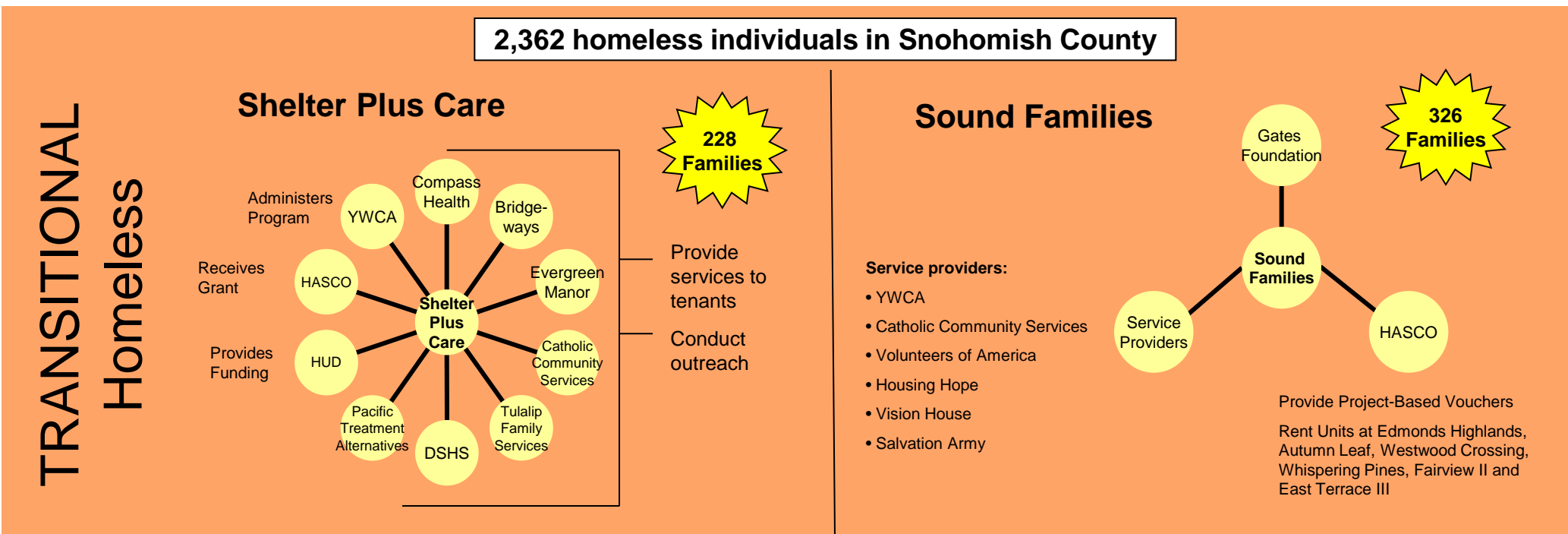
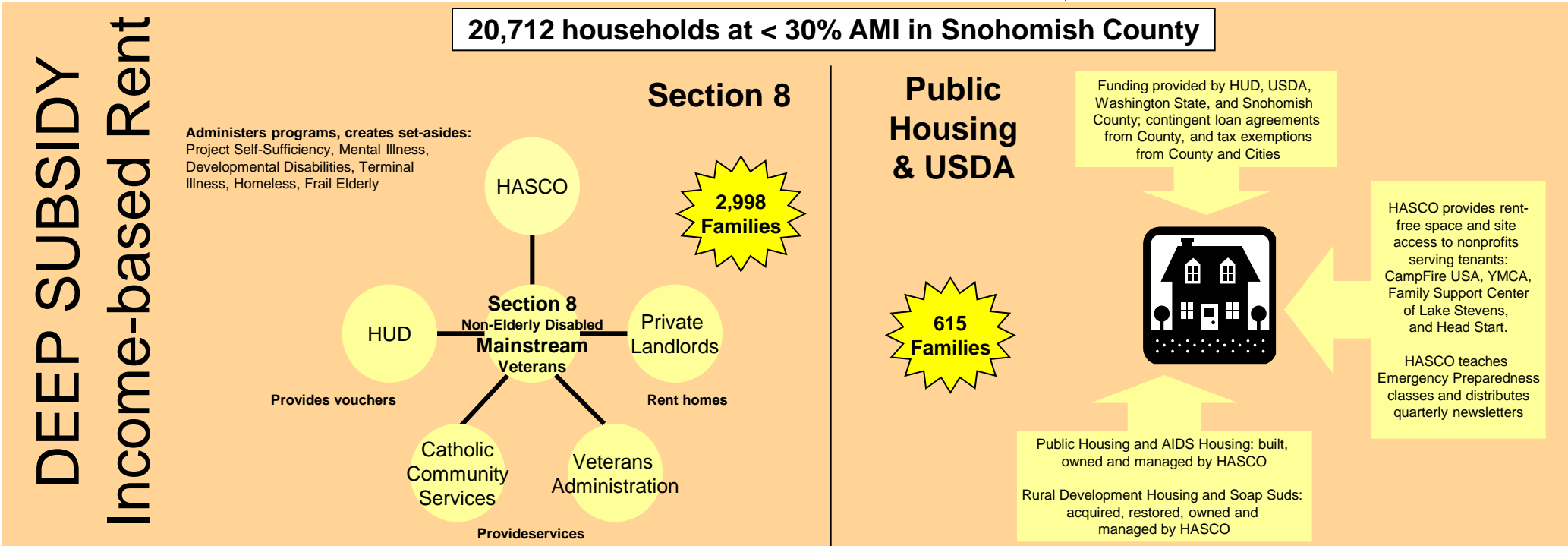
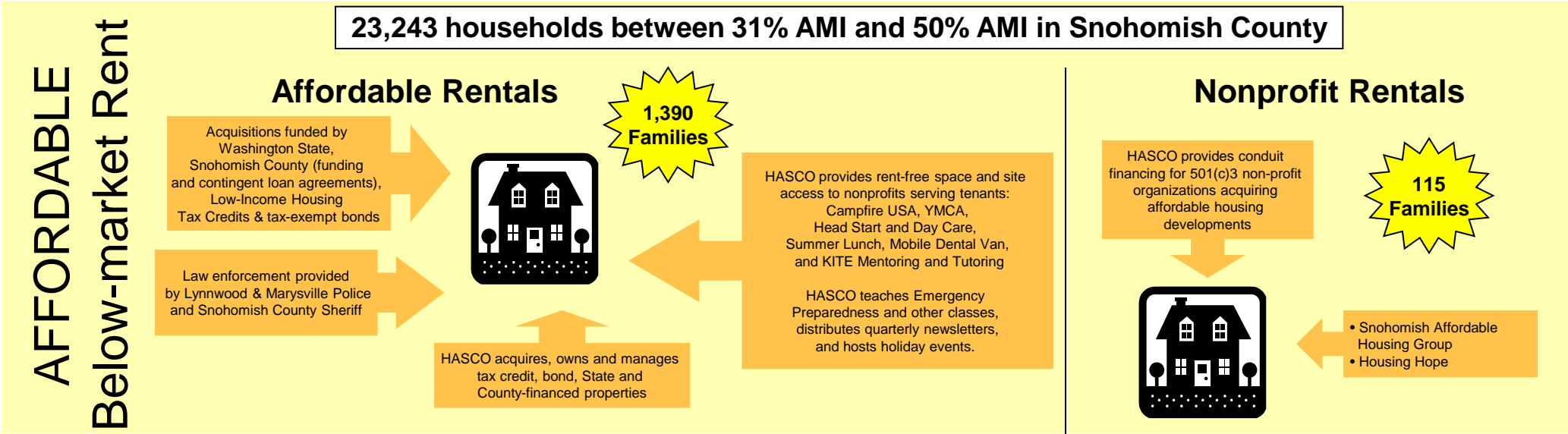
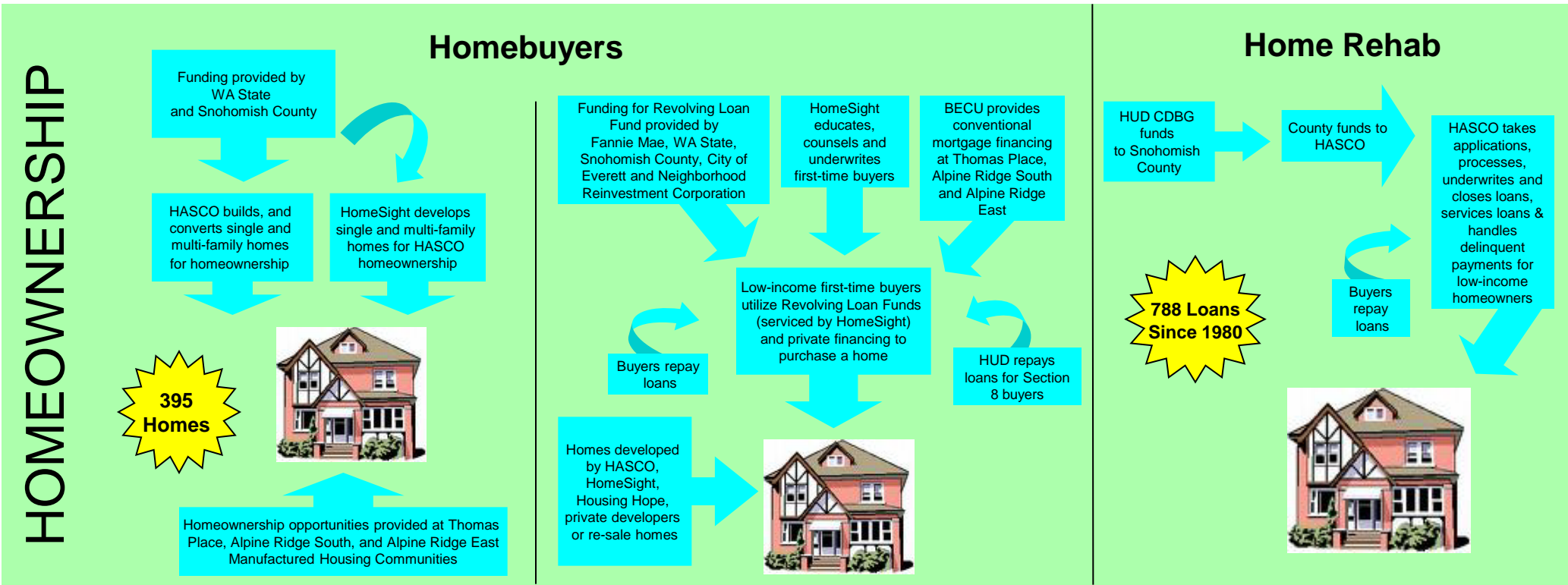




Housing Authority of Snohomish County Housing Continuum

Updated 04/01/10



FOOTNOTES

HOMEOWNERS

Homebuyers

- Homes includes: 4 homes in Arlington, 4 homes in Kellogg Village in Marysville, 9 unit subdivision in Lynnwood, 50-unit Thomas Place, 35-unit Kokanee Creek, the 157-unit Markland Woods Condo Conversion, the 93 homes at Alpine Ridge South and East Manufactured Housing Communities, and 43 public housing units sold off, for a total of 395

AFFORDABLE HOUSING

Number of households between 31% and 50% AMI is as of 2000 and comes from the 2007 Snohomish County Affordable Housing Production Plan

Nonprofit Rentals

Snohomish Affordable Housing Group (SAHG)

505 5th Street = 21 units

McDonald Street = 21 units

Housing Hope

Avondale Village = 14 units

Previously constructed with conduit financing:

(SAHG) 400 First Street = 17 units

(SAHG) 7th and D Street = 42 units

Josephine Sunset Home = 55 units

DEEP SUBSIDY

Number of households under 30% AMI was as of 2000 and comes from the 2007 Snohomish County Affordable Housing Production Plan

Section 8

- Total of 2,998 vouchers, which includes 323 project-based vouchers

Sound Families

- Sound Families units/beds include the following: 7 – Autumn Leaf, 12 – Edmonds Highlands, 15 – Lincoln Way Apartments, 21 – Maple Leaf Meadows, 25 – Pregnant and Parenting Women, 15 – Vision House, 10 – New Tomorrows, 117 – Housing Hope Scattered Site, 15 – Meadowdale Apartments, 22 – Trinity Place, 19 – Fairview and East Terrace, 48 – Wear to Live, Victorian Woods and Somerset Village for a total of 326. All units have project-based vouchers except for the 7 beds at Autumn Leaf.

TRANSITIONAL

Number of homeless persons comes from the 2010 point in time count of homeless persons